

# **US Swine Health Improvement Plan (US SHIP)**



## **House of Delegates Meeting (US SHIP HOD)**

**September 3 – 5, 2024**

**Doubletree by Hilton**

**Bloomington, MN**

Meeting Agenda

&

Proposed Updates to Program Standards and  
Resolutions to be Considered at HOD 2024

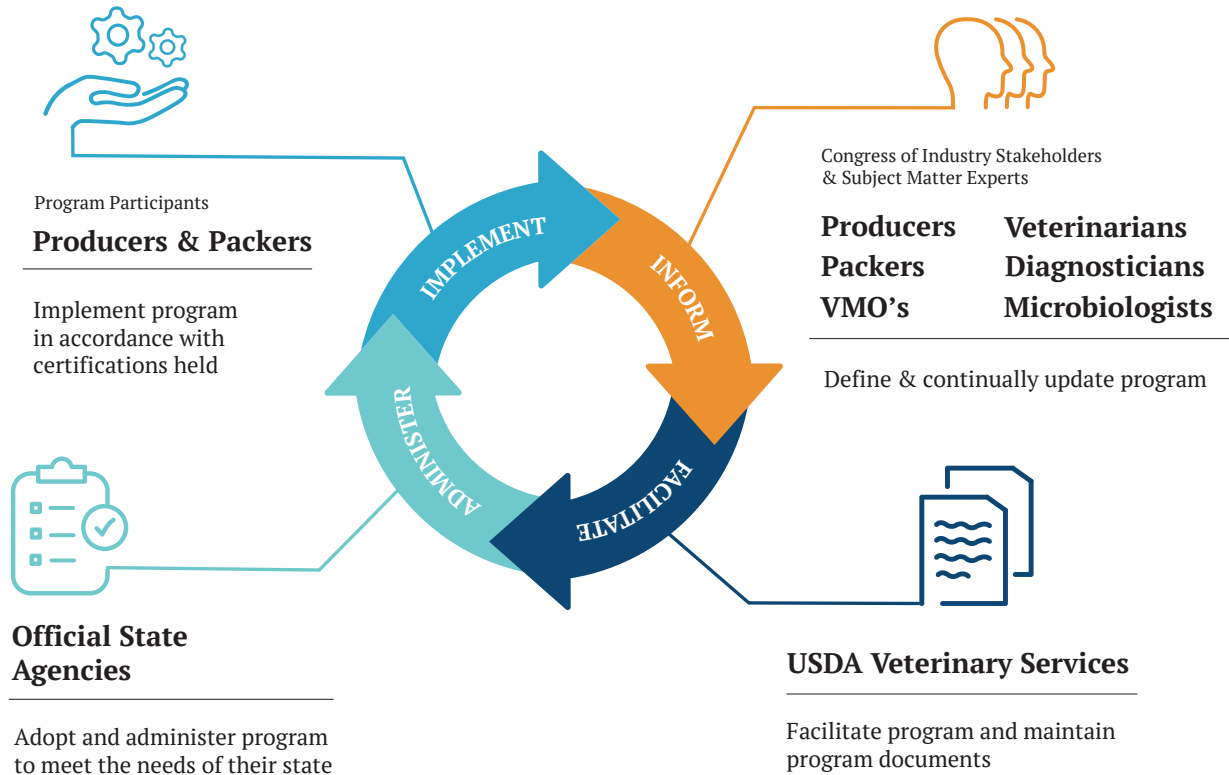


# US Swine Health Improvement Plan



## ASF-CSF Monitored Certification

“A proven platform for safeguarding, certifying, and bettering animal health”



## Industry, State, & Federal Partnership

Pathway for improving preparedness across US Pork Industry

US SHIP will establish a **National Playbook** of technical standards centering on **Prevention** and **Demonstration of Freedom of Disease** Outside of Control Areas in Support of Animal Health, Commerce, and Trade.

## Biosecurity, Traceability, and Disease Surveillance

# Table of Contents

---

<b>Overview of US SHIP</b> .....	5
<b>Acknowledgments</b> .....	6
<b>Meeting Objectives</b> .....	7
<b>Draft Agenda</b> .....	9
<b>Current Program Standards</b> .....	11
 <b>PROPOSED UPDATES TO PROGRAM STANDARDS AND RESOLUTIONS TO BE CONSIDERED IN 2024:</b>	
<b>Proposed Updates to Program Standards</b> .....	19
(1) Inclusion of Site Name, Premises Identification Numbers (PIN) and State on US SHIP Qualifying Submissions to NAHLN Labs .....	20
(2) US SHIP Official State Agencies (US SHIP OSA) requirement to report and keep the status of the US SHIP certifications held by the participating sites current in the US SHIP Site Status Verification Database .....	22
(3) US SHIP House of Delegates voting delegate allocation of At-Large Breeding Herd and Growing Pig Delegates based upon certification (vs enrollment) beginning in 2025 .....	26
<b>Proposed Resolutions</b> .....	27
(1) Explore Utility of Aggregate Samples as a Complementary Surveillance Tool to the Individual Sick Sow Testing in Commercial Scale Breeding Herds as Part of the ASF/CSF Risk Level 2 and 3 Testing Requirements.....	28
(2) Continuation of a broadly applicable Feed Ingredient Import pilot program across a substantive subset of US pork industry participants and feed industry stakeholders. ....	30
(3) US SHIP Secure Pork Supply Plan Working Group Recommendations.....	32
(4) Extend the US Swine Health Improvement Plan (US SHIP), traceability pilot to support a national swine traceability approach by further developing the “US SHIP Compliant Repositories of Inter-Premises Swine Movement Records” for capturing movement records of swine being moved interstate for further growing, breeding, or exhibition in near real-time across a number of US States .....	33

(5) Request US SHIP participant State Animal Health Officials (SAHO) to commission a working group to define and propose an alternative approach to report movements that occurred under Swine Production Health Plans (SPHP) or CVI movement by US SHIP participants towards the usage of a centralized US SHIP compliant repository(ies) approach.....	35
(6) Explore the potential for PEDV certification in US SHIP .....	37
(7) Inclusion of a non-voting GCC position for a State Animal Health Official .....	38
 <b>US SHIP US SHIP Classifications, Delegate Allocation, and Governance .....</b>	<b>39</b>

# Overview of US SHIP

---

US SHIP is being modeled after the National Poultry Improvement Plan (NPIP), a collaborative effort involving industry, state, and federal partners providing standards for certifying the health status of greater than 99% of commercial scale poultry and egg operations across the US. US SHIP aims to establish a similar platform for safeguarding, improving, and representing the health status of swine across participating farm sites, supply chains, states, and regions.

Considerable progress has been made over the course of the first four years of the initial pilot phase of US SHIP resulting in a pathway forward towards establishing US SHIP as an officially recognized (USDA codified) program for certifying the health of US swine. The USDA also received appropriations for US SHIP in the FY2024 federal budget providing funding to initiate the hiring of a dedicated USDA staff for US SHIP, similar to NPIP.

With 36 participating states and over 11,500 swine production sites representing approximately two-thirds of the US swine population already enrolled in US SHIP, the US swine industry has demonstrated the interest and need for a national health certification program.

The initial objectives for US SHIP are to develop and implement an African Swine Fever (ASF)-Classical Swine Fever (CSF) Monitored Certification of US pork production operations (farm sites and slaughter facilities) to mitigate risks of disease introduction and provide a practical means for demonstrating evidence of freedom of disease (outside of foreign animal disease control areas) in support of ongoing interstate commerce and a pathway towards the resumption of international trade over the course of a trade impacting disease response and recovery period. However US SHIP can also support endemic disease certification. A PEDV breakout session and proposed resolution on PEDV will be forthcoming at the House of Delegates this year.

US SHIP is designed to be applicable across the full-spectrum of US pork industry participants from the small show pig farmer to the larger commercial producers, live animal marketing operations, and slaughter facilities. Deriving program standards that are relevant to and enabling participation across the full-breadth of US commercial pork industry participants is essential. A critical mass of participation is a foundational element necessary for being able to represent the health status of domestic pig production operations across supply chains, areas, states, and regions.

The development of the US SHIP program has been supported and endorsed by the National Pork Producers Council, National Pork Board, Meat Institute, United States Animal Health Association, American Association of Swine Veterinarians, and the American Association of Veterinary Laboratory Diagnosticians and in March of 2023 the National Pork Forum unanimously passed a resolution encouraging all pork producers to enroll in US SHIP.

In summary the ASF-CSF Monitored certification will establish a national playbook of technical standards and associated certification recognized across participating states that centers on disease prevention and demonstration of freedom of disease outside of control areas in support of animal health, commerce, and trade.

**The time for such a national strategy is now!**

# Acknowledgments

---

The US SHIP development project investigators and staff would like to thank the myriad of industry, state, and federal partners that have volunteered their time, subject matter expertise, and energies towards informing the development of a US SHIP customized to meet the needs of the 21<sup>st</sup> century US pork industry.

Since its inception in late 2020, US SHIP has utilized the engagement and contributions of the ***more than 250 US pork industry participants*** (e.g., producers, packers, veterinarians, nutritionists, VDLs / academia, and state and federal veterinary medical officials) from across the US. The expertise and dedication of the individuals that have participated in technical working groups, pilot projects, research endeavors, or served in an advisory capacity have been exemplary.

The collaboration and support provided by the National Pork Board, National Pork Producers Council, Meat Institute, United States Animal Health Association, Swine Health Information Center, and the American Association of Swine Veterinarians has been nothing short of tremendous and foundational towards moving this precedent setting endeavor forward.

A special word of thanks to the National Pork Board for the provision of funding to off-set the costs to host (meals, convention hall meeting rooms, AV support) this 4th US SHIP HOD meeting.

Also, a word of thanks to US SHIP Technical Committee Working Group Leaders that have facilitated the process of developing the proposed updates to the Program Standards and the Resolutions to be discussed and considered further at this US SHIP HOD.

And finally, many thanks to the US SHIP General Conference Committee which was elected at the 2023 HOD and have dedicated considerable time and effort in providing guidance and direction for the program as it progresses towards a USDA codified program.

## **US SHIP General Conference Committee:**

Mike Walker, North Central region – **Chair**  
Ryan Pudenz, At-large – Vice chair  
Mary Battrell, South Atlantic region  
Don Davidson, North Atlantic region  
Jesse Heimer, At-large Exhibition Swine  
Christine Mainquist-Whigham, Western region  
Mike Paustian, Central region  
AV Roth, East Central region  
Katie Stack, At-large Packer/Slaughter Facility

# Meeting Objectives

---

US SHIP House of Delegates Participant,

Thank you for attending the 4th US SHIP House of Delegates (HOD) meeting that is being held at the DoubleTree by Hilton in Bloomington, MN.

Objectives of this forum of US pork industry stakeholders:

1. Further introduce and orientate interested US pork industry, state, and federal partners to this US Swine Health Improvement Plan (US SHIP).
2. Review, discuss, and vote upon proposed updates to the Program Standards and a series of Resolutions being brought forth for consideration.
3. Provide participatory based input towards US SHIP program content, and to determine additional items of high relevance related to US swine health and foreign animal disease preparedness, including the consideration to expand beyond the current scope of ASF/CSF to include PEDV, which would establish the first certification for an endemic disease.
4. Share current updates and transitional plans for ramping US SHIP to an officially recognized USDA Swine Health Program.

The US SHIP HOD is a decision-making body composed of US pork industry participants and subject matter experts that aim to represent the interests of pork industry stakeholders across each of the states that have expressed an interest in participating in US SHIP. As of July 15, 2024, 36 states have expressed interest to participate, and a total 249 voting delegate invitations have been extended to participate in this 4<sup>th</sup> US SHIP HOD.

Each state expressing interest has been allocated a specified number of voting delegates and the opportunity to invite up to 2 non-voting guests to attend the US SHIP HOD meeting. The voting delegate allocation includes a baseline allocation to each state, as well as an allocation proportionate to the capacity (inventory) of the Breeding Herd and Growing Pig production sites (respectively) enrolled in US SHIP that are located in each respective state.

Official State Agencies (OSAs) in conjunction with their state pork producer associations have been asked to seek volunteers to serve as voting delegates or non-voting guests in this US SHIP HOD. Each participating state's voting delegation is to be inclusive of the State Animal Health Official or their designee. State level participation in this US SHIP development project will be determined by the State Animal Health Official. Delegates must be present to vote at the US SHIP HOD.

Individual delegates attending the US SHIP HOD cannot cast more than one vote or cast votes on other delegates' behalf (i.e., one person/delegate = one vote). Please reach out to your respective US SHIP OSA or state pork producer association if you would like to be considered as a voting delegate or non-voting guest.

The US SHIP development project investigators, staff, and technical committees have worked earnestly to ensure the Program Standards and Resolutions being set forth for consideration represent practical and tangible improvements to the current industry status quo for animal health.

US SHIP OSAs and US SHIP HOD meeting participants are encouraged to review and discuss the proposed Program Standards and Resolutions to be considered within their respective places of business and collectively prior to the US SHIP HOD meeting in September. In addition, the 2024 HOD will include elections for three (3) of the nine (9) General Conference Committee (GCC) positions.

As you have the opportunity to review the enclosed information, the US SHIP office would certainly welcome any questions, suggestions, or concerns.

US SHIP Contact Information:

Email: [usship@iastate.edu](mailto:usship@iastate.edu)

Phone: 515-294-8611

Website: [usswinehealthimprovementplan.com](http://usswinehealthimprovementplan.com)

Thank you again for your interest in volunteering your time and insight towards helping form and shape this precedent setting endeavor that has the overarching goal of establishing a sustainable platform for safeguarding, certifying, and bettering the health of US swine and longer-term competitiveness of the US pork industry.

US Swine Health Improvement Plan Development Project Investigators and Staff.



# Draft Agenda

---

## Tuesday, September 3th

---

- 1:30 pm — US SHIP Registration Table Open
- 3:00 pm — US SHIP Official State Agency Session (both SAHO's & Sate Execs)
- *Best practices – data management, advancing enrollment & certification, SSVdb usage.*
  - *Transition plans from pilot to codified program and beyond*
- 6:00 pm — US SHIP Reception

## Wednesday, September 4th

---

- 7:00 am — Continental breakfast
- 8:00 am — General Session
- Welcome, agenda/objectives, and US SHIP year in review
  - HOD agenda/objectives, brief US SHIP year in review
  - Welcome – Minnesota/GCC – Mike Walker, GCC chair
  - Welcome – Minnesota/NPPC board president
  - NPB priorities in support of US SHIP
  - USDA APHIS update
  - NPIP, the model for US SHIP
  - Traceability level set – What is the “End-Game”?
  - GCC candidate
- 10:00 am — Break: coffee and refreshments
- 10:30 am — Breakout Session I
- Traceability
  - Feed Biosafety
  - Feral Pig/SPS
- 12:00 am — Lunch
- 1:30 pm — Breakout Session II
- Surveillance
  - GCC - governance, operations, and USDA transition
  - PEDV
- 3:00 pm — Break: coffee and refreshments
- 3:30 pm — Breakout Session III
- Swine Exhibition
  - Live haul sanitation
  - Site status verification database use - Packer/SAHO
- 6:00 pm — Cash Bar
- 6:30 pm — Banquet - Swine Exhibition – Who are we and why do we matter?

## Thursday, September 5th

---

- 7:00 am           — Continental breakfast
- 8:00 am           — General Session
- Breakout session highlights
    - GCC
    - PEDV
    - Packer/SAHO
    - Swine exhibition
    - Live haul sanitation
    - Site biosecurity/feral pig
    - Feed biosafety
    - Surveillance
    - Traceability
- 9:00 am           — Break
- 9:30 am           — Business Meeting Agenda
- Call to Order, Meeting Procedures, 2023 HOD Minutes
  - GCC elections: Regions 3 and 4, Exhibition Swine
  - Program Standards
    - Surveillance: PIN, Site Name and State on Diagnostic Submissions
    - Program: Site Status Verification Database Reporting
    - Governance: Certification vs Enrollment for At-Large Delegates
  - Resolutions
    - Surveillance: Options for use of aggregate samples in Breeding Herds
    - Feed biosafety: expand Imported Feed Ingredients pilot
    - Site biosecurity/feral pig: Synergies with Secure Pork Supply Plan for Pigs with Outdoor Access
    - Traceability: Extent pilot for building towards a national program of traceability in US Swine
    - Traceability: SAHO working group to define pathway for using a US SHIP Compliant Repositories of Inter-Premises Swine Movement Records as an acceptable approach for meeting reporting requirements
    - PEDV: Explore option of a PEDV health status certification
    - Governance: Inclusion of a non-voting GCC position for a State Animal Health Official
  - GCC Election Results
  - Business meeting adjourned
- 12:00 pm         — Closing Session - Next Steps for US SHIP & Vision for the Future
- HOD Adjourned

# Summary of Program Standards

---

## Program Standards

A summary of the program standards are listed below. These are the requirements for conferring the US SHIP ASF-CSF Monitored Certification to participating Production Sites and Slaughter Facilities.

Note: Slaughter facilities will not be required to have 100% of their supply chain originating from ASF-CSF Monitored Certified production (farm) sites to participate in US SHIP..

### ENROLLMENT:

---

- Participating premises are to be enrolled with the US SHIP Official State Agency (US SHIP OSA) in the state in which the premises is located.

### VETERINARY SERVICE PROVIDER:

---

- Producers are to maintain a valid veterinary client-patient relationship with a licensed and federally accredited veterinarian.

### TRACEABILITY:

---

#### Premises level information

- Premises level demographic information for each participating premises is to be complete, accurate, current, and on-file with the US SHIP Official State Agency in which the premises is located.

The minimum required demographic information to be recorded for each premises is:	
<input checked="" type="checkbox"/> Premise Identification Number (PIN)	<input checked="" type="checkbox"/> Site Owner Contact Information
<input checked="" type="checkbox"/> Premise Type (Boar Stud, Breeding Herd, Farrow-Feeder/Finish, Growing Pig, etc.)	<input checked="" type="checkbox"/> Common Name of Site
<input checked="" type="checkbox"/> Site Location Information: Latitude and Longitude 911 Street Address, if one has been assigned	<input checked="" type="checkbox"/> Expected Site Capacity (Number of Breeding Swine and/or Growing Pigs)
<input checked="" type="checkbox"/> Date of last usage of the site by swine owner (if applicable)	<input checked="" type="checkbox"/> Date of initial enrollment of the site in US SHIP, or date of first usage of the site by current swine owner

## TRACEABILITY: CONT.

---

### Swine movement information

- Participants are to maintain records of the intrastate and interstate movements of live swine into and out of each participating premises.
- Participants must demonstrate competency in providing at least 30 days of movement information electronically in a common format (e.g., a prescribed CSV file) to the US SHIP Official State Agency in a timely manner (e.g. < 72 hours).

For participants with multiple participating premises within a given state, such competency can be demonstrated on a site-by-site basis or en-masse.

The minimum information required to be recorded for each movement is:		
<input checked="" type="checkbox"/> Date of movement	<input checked="" type="checkbox"/> Origin State	<input checked="" type="checkbox"/> Origin PIN
<input checked="" type="checkbox"/> Destination State	<input checked="" type="checkbox"/> Destination PIN	<input checked="" type="checkbox"/> Head in movement (Only When needed to Meet a Regulatory Reporting Requirement)
<input checked="" type="checkbox"/> Animal type in movement		

### Semen movement information

- Boar stud premises participants are to maintain records of the intrastate and interstate movements of semen distributed out of each participating premises.
- Participants must demonstrate competency in providing at least 30 days of movement information electronically in a common format (e.g., a prescribed CSV file) to the US SHIP Official State Agency in a timely manner (e.g. < 72 hours).

For participants with multiple participating premises within a given state, such competency can be demonstrated on a site-by-site basis or en-masse.

The minimum information required to be recorded for each movement is:		
<input checked="" type="checkbox"/> Date of movement	<input checked="" type="checkbox"/> Origin State	<input checked="" type="checkbox"/> Origin PIN
<input checked="" type="checkbox"/> Destination State	<input checked="" type="checkbox"/> Destination PIN	<input checked="" type="checkbox"/> ± Number of units in shipment (Only When needed to Meet a Regulatory Reporting Requirement)

### Animal Identification

- Certified ASF-CSF monitored participants must comply with existing state and federal laws regarding animal/group/lot identification.

## BIOSECURITY:

---

### Feed Biosafety

In the event of an ASF or CSF incursion into the US (ASF/CSF Risk Level 3; immediately after incursion, or if state/region positive), participants are to implement a temporary cessation of feeding spray-dried plasma, blood meal, meat and bone meal, intestinal peptide products, or other meal-based feedstuffs that have the potential to be of porcine origin.

This temporary cessation will be lifted if ingredients described above are sourced from:

- a. Suppliers with enhanced post-processing biosafety measures in place<sup>1,2</sup>
- b. States or regions at ASF/CSF Risk Level 2 (Operations normalizing, State or Region negative).
- c. US returns to ASF/CSF Risk Level 1 (US Negative).

<sup>1</sup> Requirements of post-processing treatment facilities:  Enhanced post-processing treatment must occur at facilities that have premises level segregation from:  Premises in which protein sources of porcine origin were initially heat treated (rendered or spray-dried) in accordance with feed grade safety requirements.  AND  Finished feed facilities manufacturing feed for swine.	<sup>2</sup> Approved post-processing treatments:  Thermal processing  OR  Ingredient quarantine/holding time and temperature
---	---

### Enrollment Survey (Biosecurity Practices)

- At enrollment, participating premises will complete a survey to provide a simplistic categorization of some of the high-level biosecurity practices being implemented at the premises. Information from this survey is to provide quantitative data to assess current standards of practice across a broad spectrum of program participants. Results will help provide insight towards consideration of additional biosecurity related program standards in the future.

### Feed Supply

- The feeding of swill, garbage, or table waste that has the potential to include meat products is strictly prohibited.

### Personnel

- Permissioned individuals that have recently been exposed to livestock, feral/wild pigs or slaughter facilities in ASF/CSF/FMD positive regions or countries abroad should only visit farms or slaughter facilities in the US after observing a 5-day downtime since arriving in the US, and donning PPE (boots/coveralls, etc.) provided by farm site or slaughter facility being visited.

## BIOSECURITY: CONT.

---

### Secure Pork Supply Site Plans

- Boar Stud, Breeding Herd, Farrow to Feeder, Farrow to Finish, and Growing Pig sites (US SHIP Production Site Types) must be able to provide access to a completed Secure Pork Supply Biosecurity Plan to the OSA within 24 hours of the request.

## SAMPLING AND TESTING (DISEASE SURVEILLANCE):

---

- Sampling and Testing Requirements of Participants

- Maintain compliance with ASF-CSF Sampling and Testing Requirements

US SHIP sampling and testing requirements will *vary by Production Site Type* and the *ASF-CSF status* of the US, State, or Region (**Tables 1, 2, and 3**).

The program is based on targeted testing of animals of poor or sub-standard health. Targeted sampling enhances both the efficiency of detection and the simplicity of sample collection across the spectrum of commercial and non-commercial farms in the U.S.

The frequency of on-site sampling is a function of time and is independent of the timing of pig movement, thereby providing for a uniform and continuous system of disease monitoring across production sites, areas, and regions.

US SHIP ASF-CSF tests are to be used for screening purposes only. Non-negative results would result in the testing laboratory (USDA NAHLN lab certified to conduct ASF-CSF testing) contacting the appropriate State and Federal animal health officials to initiate a Foreign Animal Disease Investigation (FADI) for the collection of additional samples for official ASF-CSF testing (confirmatory) purposes.

Table 1. Sampling and Testing Requirements for ASF-CSF Risk Level 1.

**ASF/CSF Status = Level 1,  
US Negative (Peace Time)**

Sampling & Testing Requirements (Alternative Options)

Production Site Type	Specimen Type(s)	I or A <sup>1</sup>	Frequency / Timing of Sampling	Sampling & Testing Requirements (Alternative Options)		
				Option 1 Individual Only	Option 2 Aggregate Only (Group or Pen)	
				# of Individuals	# of Pools (Groups of up to 5)	# of Samples
<b>Boar Stud</b> Mature Boars, Distributing Semen, ± On-Site Isolation	Oral Swab Blood Swab Oral Fluids	I I I		No Additional Sampling and Testing Required		
<b>Breeding Herd</b> Breed to Wean, Breeding/ Gestation/ or Farrow Only, ± On-Site GDU or Isolation	Oral Swab Blood Swab Oral Fluids	I I I		No Additional Sampling and Testing Required		
<b>Growing Pig</b> Nursery, Grower, Finisher, Isolation	Oral Swab Blood Swab Oral Fluids	I I A		No Additional Sampling and Testing Required		
<b>Farrow to Feeder Farrow to Finish</b>	Requirements of Breeding Herd + Growing Pig In Numbers, and Growing Pig Only in Frequency					
<b>Small Holding</b> ≥ 100 or < 1,000 Breeder or Feeder Swine	Oral Swab Blood Swab Oral Fluids	I I I or A		No Additional Sampling and Testing Required		
<b>Non-Commercial</b> < 100 Breeder or Feeder Swine.	Oral Swab Blood Swab Oral Fluids	I I A		No Additional Sampling and Testing Required		

<sup>1</sup> I = Individual Sample, A = Aggregate (Group or Pen) Sample

Table 2. Sampling and Testing Requirements for ASF-CSF Risk Level 2.

**ASF/CSF Status = Level 2,  
US Positive, Operations Normalizing, and  
State or Region Negative (All US SHIP  
Testing is outside of Control Areas)**

Sampling & Testing Requirements (Alternative Options)

Production Site Type	Specimen Type(s)	I or A <sup>1</sup>	Frequency / Timing of Sampling	Option 1 Individual Only		Option 2 Aggregate Only (Group or Pen)
				# of Individuals	# of Pools (Groups of up to 5)	# of Samples
<b>Boar Stud</b> Mature Boars, Distributing Semen, ± On-Site Isolation	Oral Swab Blood Swab Oral Fluids	I I I	2X per month	10	2	-
<b>Breeding Herd</b> Breed to Wean, Breeding/ Gestation/ or Farrow Only, ± On-Site GDU or Isolation	Oral Swab Blood Swab Oral Fluids	I I I	Monthly	10	2	-
<b>Growing Pig</b> Nursery, Grower, Finisher, Isolation	Oral Swab Blood Swab Oral Fluids	I I A	Monthly	10	2	2
<b>Farrow to Feeder Farrow to Finish</b>	Requirements of Breeding Herd + Growing Pig In Numbers, and Growing Pig Only in Frequency					
<b>Small Holding</b> ≥ 100 or < 1,000 Breeder or Feeder Swine	Oral Swab Blood Swab Oral Fluids	I I I or A	Monthly	5	1	1 per 500, or 2 if > 500 pigs
<b>Non-Commercial</b> < 100 Breeder or Feeder Swine	Oral Swab Blood Swab Oral Fluids	I I A	Quarterly	5	1	1

<sup>1</sup> I = Individual Sample, A = Aggregate (Group or Pen) Sample



Table 3. Sampling and Testing Requirements for ASF-CSF Risk Level 3.

**ASF/CSF Status = Level 3,  
US Positive, Immediately After Incursion,  
or if State or Region Positive. (All US  
SHIP Testing is Outside of Control Areas)**

Sampling & Testing Requirements (Alternative Options)

Production Site Type	Specimen Type(s)	I or A <sup>1</sup>	Frequency / Timing of Sampling	Option 1		Option 2
				Individual Only		Aggregate Only (Group or Pen)
				# of Individuals	# of Pools (Groups of up to 5)	# of Samples
<b>Boar Stud</b> Mature Boars, Distributing Semen, ± On-Site Isolation	Oral Swab Blood Swab Oral Fluids	I I I	Weekly	10	2	-
<b>Breeding Herd</b> Breed to Wean, Breeding/ Gestation/ or Farrow Only, ± On-Site GDU or Isolation	Oral Swab Blood Swab Oral Fluids	I I I	2X per month	10	2	-
<b>Growing Pig</b> Nursery, Grower, Finisher, Isolation	Oral Swab Blood Swab Oral Fluids	I I A	Monthly	20	4	1 per 500 pigs with maximum of 8 per site
<b>Farrow to Feeder Farrow to Finish</b>	Requirements of Breeding Herd + Growing Pig In Numbers, and Growing Pig Only in Frequency					
<b>Small Holding</b> ≥ 100 or < 1,000 Breeder or Feeder Swine	Oral Swab Blood Swab Oral Fluids	I I I or A	Monthly	10	2	1 per 500, or 2 if > 500 pigs
<b>Non-Commercial</b> < 100 Breeder or Feeder Swine	Oral Swab Blood Swab Oral Fluids	I I A	Monthly	5	1	1

<sup>1</sup> I = Individual Sample, A = Aggregate (Group or Pen) Sample

## SAMPLING AND TESTING (DISEASE SURVEILLANCE): CONT.

---

- ☑ Incorporating Use of USDA ASF/CSF Active Surveillance of Case Compatible Submissions to Veterinary Diagnostic Labs Into the US SHIP ASF/CSF Monitored Certification Program.

### **Additional Program Administrative Requirement for US SHIP Sampling & Testing:**

ASF/CSF test records of case-compatible submissions from US SHIP ASF/CSF Monitored premises included in the USDA ASF/CSF Active Surveillance program (i.e., routine screening of case-compatible submissions made to veterinary diagnostic labs in the National Animal Health Lab Network) are to be collated, summarized and made available in near-real time to the appropriate stakeholder audiences. The US SHIP Official State Agencies and State Animal Health Officials Premises are to be provided access to the total number and specific US SHIP ASF/CSF Monitored premises being surveilled via this surveillance stream in their state. Aggregate level summaries (state level data) of the total number tests of and total number of US SHIP ASF/CSF Monitored premises being surveilled via this USDA ASF/CSF Active Surveillance program are to be made available to broader US pork industry stakeholder audiences.

### **Notes:**

- This US SHIP Program Administrative Requirement will become effective upon the completion of the necessary software related integrations that are anticipated to be completed in CY 2024.
- US SHIP Program Administrative Requirements are relevant to all US SHIP Sampling and Testing. However, the initial focus of this requirement and associated deliverables centers on US SHIP ASF/CSF Risk Level 1 (ASF/CSF Not Present in US / Peacetime).
- This US SHIP Program Administrative Requirement does not have any impact on the means (current standard practices used) in which Submitting Veterinarians and Program Participants are routinely receiving tests result information from their veterinary diagnostic lab service providers.

# Proposed Updates to Program Standards

---

**Definition: Program Standards:** Requirements to be met or exceeded by enrolled producers and slaughter facilities to be certified in US SHIP.

Approval of Program Standards requires super-majority (2/3) vote by the US SHIP HOD.

The current US SHIP Program Standards are available on the US SHIP website under Documents ([usswinehealthimprovementplan.com](http://usswinehealthimprovementplan.com)).

SUBMITTED BY: US SHIP Sampling & Testing Working Group

SUBJECT MATTER: Inclusion of Site Name, Premises Identification Numbers (PIN) and State on US SHIP Qualifying Submissions to NAHLN Labs

**PROPOSED STANDARD:**

The Site Name, Premises Identification Number (PIN), and State where the animals being tested are located are required to be included on US SHIP Qualifying Submissions made to veterinary diagnostic labs.

---

Definitions associated with this Proposed Standard:

**US SHIP Qualifying Submissions for the ASF/CSF Monitored Certification:**

Risk Level 1 (Peacetime):

- Case compatible (sick pig) submissions<sup>1</sup>

Risk Level 2 and Risk Level 3 (In event of an introduction of ASF/CSF into US):

- Case compatible (sick pig) submissions<sup>1</sup>
- All submissions made for meeting the testing requirements to maintain the ASF/CSF Monitored certification.

<sup>1</sup>**Case-compatible submissions:** These are case submissions being made to veterinary diagnostic labs to identify the cause of clinically ill swine or increased mortality on swine farms that include the following:

- Adequate case history of the clinical observations of the clinical disease and/or increased mortality being observed.

and

- One or more of the appropriate samples types (i.e., Spleen or Spleen Pulp Swabs, Tonsil, Lymph Node, or Whole Blood or Blood Swab) taken from the clinically affected animal(s) being evaluated.

**Note:** The veterinary diagnostic lab (i.e., lab in the USDA's National Animal Health Lab Network) will assess the clinical case history and specimens provided to determine inclusion in the USDA ASF CSF Active Surveillance of case-compatible (sick pig) submissions to veterinary diagnostic labs.

## **Background/Reason:**

The *Site Name*, *Premises Identification Number (PIN)*, and *State* where the animals being tested are located are the baseline minimum of premises-level demographic information needed to be included in the submissions to veterinary diagnostic labs for the ASF/CSF PCR test results associated with the ASF/CSF Monitored Certification to be duly captured, recognized, and made available to the appropriate US SHIP Official State Agency (OSA).

## **Baseline premises level demographic information required in diagnostic submissions:**

**Premises Identification Number (PIN)** = Is the unique premises level identifier being used across the entirety of the US SHIP program and is required for identifying the resulting ASF/CSF test results as being derived from a US SHIP participating premises.

**State:** Enables the routing of the ASF/CSF test results derived from participating premises to the appropriate US SHIP OSA.

**Site Name:** Provides the US SHIP OSA a secondary, human readable, and more intuitive means for understanding the premises in which the samples were derived.

## **Additional Notes:**

1. Incorporating these three baseline premises level identifiers inclusion in the submissions to veterinary diagnostic labs as program standard is fully aligned with the updated Program Administrative Standard entitled “Incorporating Use of USDA ASF/CSF Active Surveillance of Case Compatible Submissions to Veterinary Diagnostic Labs Into the US SHIP ASF/CSF Monitored Certification Program” that was passed at the 2023 US SHIP HOD.
2. This proposed program standard would be useful in helping raise producer, practitioner, and diagnostician awareness of and participation in the “USDA ASF/CSF Active Surveillance of Case Compatible Submissions to Veterinary Diagnostic Labs” surveillance stream.
3. This proposed program standard (related to submissions within the scope of the US SHIP ASF/CSF Monitored Certification) will be useful toward enhancing the adoption of practices, methods, and systems used for including this critically important premises level demographic information when making submissions to veterinary diagnostic labs. Establishing such best practices as a component of day-to-day operations in peacetime is the most critical component for truly enhancing emergency or foreign animal disease preparedness.
4. SAHO’s & OSA’s: “Submission Level Identifiers” (e.g., Veterinarian, Veterinary Clinic, Animal Owner or Managing Entity Name) and “Premises Level Identifiers” (site name, site address, & PIN) and “Animal or Sample Level Identifiers” that are received with the submission record to the veterinary diagnostic labs are also included in the resulting ASF/CSF test records made available to the appropriate US SHIP OSA & SAHO.

SUBMITTED BY: US SHIP General Conference Committee

SUBJECT MATTER: US SHIP Official State Agencies (US SHIP OSA) requirement to report and keep the status of the US SHIP certifications held by the participating sites current in the US SHIP Site Status Verification Database.

#### PROPOSED STANDARD:

The status of the US SHIP health status certifications held by participating premises are as reported to the US SHIP Site Status Verification Database from the US SHIP Official State Agencies.

US SHIP Official State Agencies are to report the current (most up to date) status of the US SHIP certifications held by the participating sites in their respective state to the US SHIP Site Status Verification Database.

Data elements to be reported to the US SHIP Site Status Verification Database:

- Premises Identification Number (PIN)
- State: the state where the Premise is located
- US SHIP ASF Monitored status: Monitored Free, Certification Expired, or Inactive
- US SHIP CSF Monitored status: Monitored Free, Certification Expired, or Inactive

Premises not reported to the US SHIP Site Status Verification Database are not recognized as holding a US SHIP health status certification.

#### **Background/Reason:**

This item is being brought forward as a Program Standard to facilitate discussion and clarify this requirement for the US SHIP OSAs to report the status of the US SHIP health status certifications held by the participating premises in their respective state to the US SHIP Site Status Verification Database.

The US SHIP Site Status Verification Database is a built for purpose database application that provides a simplistic means for maintaining the current and officially recognized status of the US SHIP certifications held by the participating sites from across the US (**Addendum 1**).

As described in this proposed program standard, only a minimum set of data fields are to be reported by the US SHIP Official State Agencies (OSAs) to the US SHIP Site Status Verification Database. All of the more detailed participant and premises level specific identifiers (e.g., names, addresses, locations, etc.) remain with the respective US SHIP OSA and ***are not*** reported to or contained in the US SHIP Site Status Verification Database.

The US SHIP Site Status Verification Database application was developed in 2023, stemming from an action item (program development need) discussed at the US SHIP 2022 HOD, and is currently being onboarded for use on a State-by-State basis.

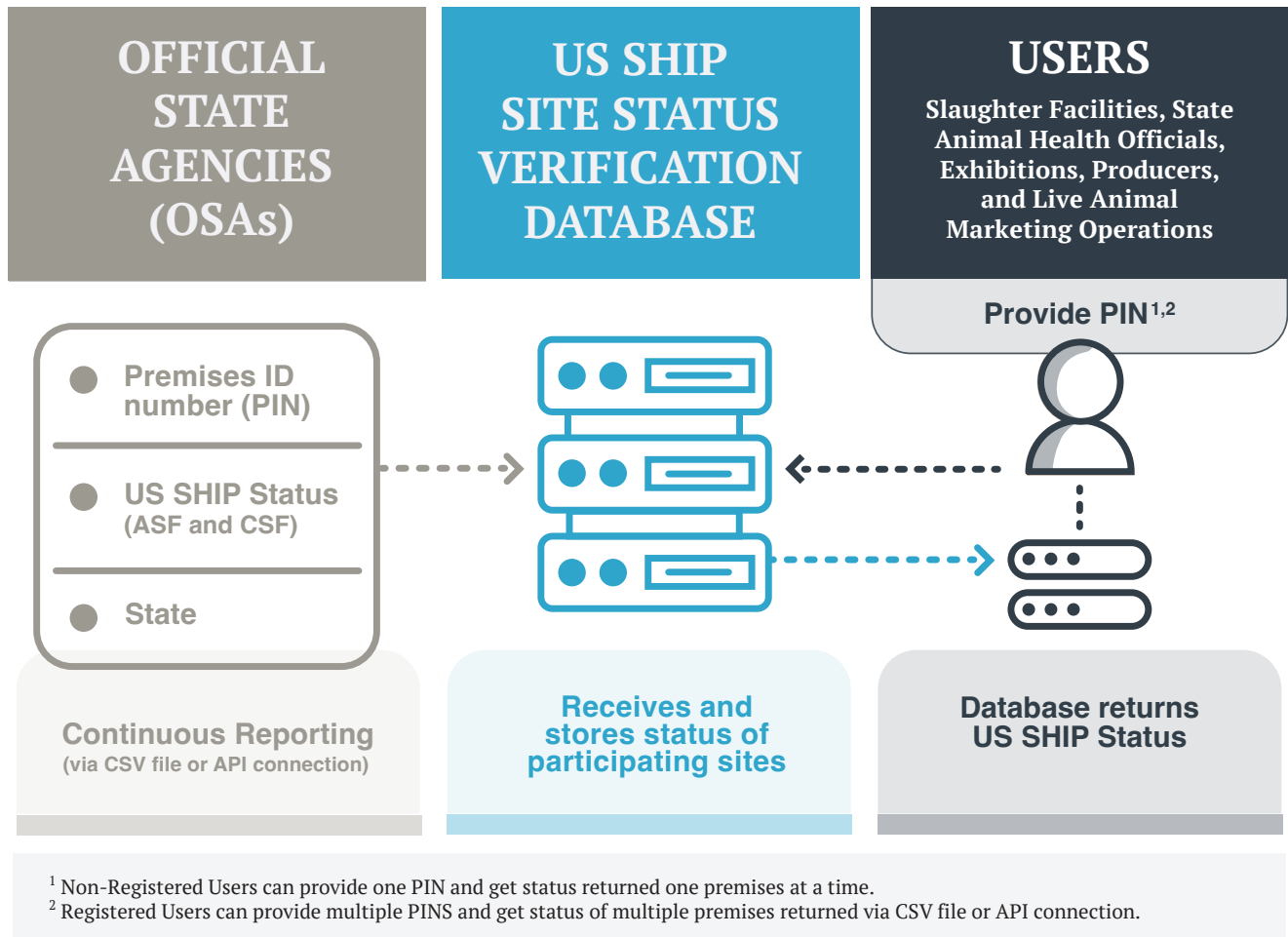
The US SHIP HOD resolution 2023-5 requested to explore alternative approaches of how US SHIP OSAs could report the status of participating premises in the states that have a state-based statute that was not allowing them to report such information to a third-party database application. Two alternative approaches were identified as solutions and are now being used by OSAs to report the status of the US SHIP health status certifications held by participating premises. The two additional (alternative) approaches for OSAs are:

- a. A legal agreement can be established between the US SHIP OSA and Iowa State University, which **currently** houses the US SHIP Site Status Verification Database. Iowa is an example of a state that took advantage of this approach.
- b. Add a check box in the US SHIP enrollment form giving US SHIP OSA permission to report the participant sites (premise ID) and the status of the US SHIP health status certifications held. Kansas is an example of a state using this approach.
  - Based on interaction with US SHIP OSAs the US SHIP Program Administration suggests the following language to be included as a check box on US SHIP enrollment forms:
    - “As a US SHIP participant, I hereby grant permission for the US SHIP OSA to share the PIN(s) and status of US SHIP health status certifications for the premises of which I have enrolled to the US SHIP Site Status Verification Database.”

# ADDENDUM 1

The basic workings and use of the US SHIP Site Status Verification Database are pictorialized and described below.

## US SHIP Site Status Verification Database Application



The US SHIP Site Status Verification Database provides end-users a simplistic means to verify the status of the US SHIP certifications held by participating premises.

End users simply provide the Premises Identification Number (PIN) of the premises in question, and the US SHIP Site Status Verification Database application returns the status of the US SHIP certifications held by that premises.



End users and use cases of the US SHIP Site Status Verification Database include:

- State Animal Health officials can use to verify status of the US SHIP certifications held by premises moving pigs into their state for further breeding, growing, or exhibition.
- Slaughter facilities can use to verify the status of the US SHIP certifications held by the premises supplying pigs to their facility to be harvested.
- Exhibitions can use to verify the status of the US SHIP certifications held by the premises pigs are being exhibited/shown.
- Live animal marketing operations channels can use to verify the status of the US SHIP certifications held by the premises supplying pigs to their facility.
- Producers can use to verify the status of the US SHIP certifications held by either their own premises or the premises of pigs of which they are purchasing or otherwise receiving pigs from third parties.

**Key Point of Functionality the US SHIP Site Status Verification Database application for**

**End Users** = End users query the database via providing the PIN of the premises in question, and the database application simply returns the current status of the US SHIP certifications held by the premises (PIN) in question.

The US SHIP Site Status Verification Database application is a built for purpose database application that is readily compatible with and independent of, whatever software/database application or other means the US SHIP OSAs from across the country are using to house the participant/premises specific information and manage the workings of the US SHIP OSA in their respective state.

The US SHIP OSAs are the only entities permissioned to report the status of the US SHIP certifications held by the participants in their respective state to the US SHIP Site Status Verification Database.

The US SHIP Program Administration is responsible for managing the services provided by the US SHIP Site Status Verification Database.

The US SHIP Site Status Verification Database is currently being housed and maintained within the information technology infrastructure used to support the Department of Veterinary Diagnostic and Production Animal Medicine at the Iowa State University College of Veterinary Medicine.

SUBMITTED BY: US SHIP General Conference Committee

SUBJECT MATTER: US SHIP House of Delegates voting delegate allocation of At-Large Breeding Herd and Growing Pig Delegates based upon *certification* (vs enrollment) beginning in 2025.

**PROPOSED STANDARD:**

Proposed Update To Existing US SHIP Program Governance Standard:

**Current:**

The pool of At-large delegates is allocated to states as a percentage of all Breeding Swine and Growing Pigs (respectively) *enrolled* in US SHIP that are located in a given state.

**Proposed Update:** (To become effective for 2025 US SHIP HOD)

The pool of At-large delegates is allocated to states as a percentage of all Breeding Swine and Growing Pigs (respectively) *certified* in US SHIP that are located in a given state.

**Background:**

The US SHIP voting delegate allocation is a formula-based approach using a combination of a baseline allocation of delegates to all participating states as well as the generation of a pool of At-Large Breeding Herd and Growing Pig Delegates.

During the current start-up phase of US SHIP, the At-large delegate allocation has been based on enrollment, as the US SHIP Official State Agencies have been at various stages of beginning to certify the participants in their respective states.

US SHIP is a program for “certifying” the health of US swine in accordance with a well-defined and common set of standards. The proposed change here aims to be consistent with the need for the US SHIP to transition from a start-up endeavor to an officially recognized program for “certifying” the health of US swine. Looking forward, it will be the US SHIP health status certification(s) held by the participating premises that will derive the recognition and value for participants. Enrollment alone will not bring value or recognition by third-parties.

Thus, the proposed update serves to have the At-large delegate allocation be reflective “certification” rather than enrollment.

# Resolutions

---

**Definition: Resolutions:** Charges to pursue initiatives or further explore specific issues that aim to further inform US SHIP program content and direction.

Approval of Resolutions require majority vote by the US SHIP HOD.

It should be understood that US SHIP is an industry, state, and federal partnership en-route to be a USDA Swine Health Program (modeled after NPIP's longstanding system of shared governance) that centers on certifying the health of US swine in accordance with well-defined program standards.

Any project-based work involving research, new system development, collaborative forums, outreach, education, and advocacy for US SHIP related efforts are only possible through the support and self-evident synergies working in partnership with the national pork producer, packer, and swine veterinary organizations (i.e., National Pork Board, National Pork Producers Council, Swine Health Information Center, Meat Institute, and the American Association of Swine Veterinarians).

The Resolutions passed at previous US SHIP HODs are available on the US SHIP website under Documents ([usswinehealthimprovementplan.com](http://usswinehealthimprovementplan.com)).

RESOLUTION NUMBER: 2024 - 1  
SUBMITTED BY: US SHIP Sampling & Testing Work Group  
SUBJECT MATTER: Explore Utility of Aggregate Samples as a Complementary Surveillance Tool to the Individual Sick Sow Testing in Commercial Scale Breeding Herds as Part of the ASF/CSF Risk Level 2 and 3 Testing Requirements.

WHEREAS, The 2024 outbreak of High-Path Avian Influenza in US dairy cattle has further exposed and reinforced the potential for using aggregate samples (i.e., bulk milk tank samples in the case of dairy farms) as a highly effective and efficient means for herd-level monitoring of pathogens of high consequence.

WHEREAS, Aggregate samples (e.g., most notably Oral Fluids, and Processing Fluids) have a well-studied and well documented track-record of success and are being used at scale for herd-level health status monitoring applications in commercial scale breeding farms across the US.

WHEREAS, Robust surveillance methods for enhancing the probabilities of early detection of circulating virus in commercial scale breeding herds weaning pigs off-site is especially important due to the recurring weaning events that involve distributing weaned pigs to any number of different locations.

Now, therefore be it RESOLVED:

The U.S. SHIP House of Delegates supports moving forward with efforts to fully vet the potential utility of incorporating aggregate samples (e.g. oral fluids, processing fluids, et al) as a complimentary surveillance tool to the individual sick sow testing in commercial scale breeding herds as part of ASF/CSF Risk Level 2 and 3 testing requirements.<sup>1</sup>

A producer led effort (facilitated with assistance US SHIP Sampling and Testing Working Group) that is inclusive of interested pork producers, swine veterinarians, diagnosticians, state animal health officials, and USDA veterinarians from Swine Staff, NAHLN, and FADDL should be convened to fully vet the potential for incorporating aggregate samples as a complementary surveillance tool to the individual sick sow sampling in the ASF/CSF Risk Level 2 and 3 testing requirements of the US SHIP ASF/CSF Monitored Certification.

This working group's findings, recommendations, and any potential proposed updates to the ASF/CSF Monitored testing requirements should be brought forward for consideration at the 2025 US SHIP HOD.

**Footnotes:**

**'Definitions of US SHIP ASF/CSF Risk Levels:**

ASF/CSF Risk Levels 1 = US Negative

ASF/CSF Risk Level 2 = US Positive, Operations Normalizing, State or Region Negative

ASF/CSF Risk Level 3 = US Positive, Immediately After Incursion, or if State or Region Positive.

**Note:** All testing for US SHIP ASF/CSF Monitor Certification is Outside of Control Areas

RESOLUTION NUMBER: 2024 - 2  
SUBMITTED BY: US SHIP Feed Biosafety Working Group  
SUBJECT MATTER: Continuation of a broadly applicable Feed Ingredient Import pilot program across a substantive subset of US pork industry participants and feed industry stakeholders.

WHEREAS, The US Swine Health Improvement Plan (SHIP) is a collaborative effort involving industry, state, and federal officials tasked with establishing a “national playbook” of technical standards associated with biosecurity, traceability, and sampling/testing.

WHEREAS, There is a recognized risk of disease transmission from both feed ingredients and whole feed and research and risk assessments continue to be conducted to assess the risks associated with importing feed ingredients from ASF-CSF positive regions and potential mitigation strategies to reduce or eliminate those risks.

WHEREAS, US SHIP presents as a platform for incorporating broadly applicable standards of practice related to mitigating the risks of disease introduction via imported feedstuffs into a swine health certification program that is national in its scope and recognition.

WHEREAS, There has been significant efforts directed towards understanding the importation of feed ingredients used in the swine industry and biosecurity practices incorporated throughout the feed supply chain.

Now, therefore be it RESOLVED:

The US SHIP House of Delegates requests the continued pursuit of a demonstration project across a substantive subset of US SHIP pork industry participants and feed industry stakeholders.

Specifically, within this continued demonstration project efforts should be directed towards increasing the breadth of representation and engagement including further discussions with producer, feed/premix manufacturer, ingredient supplier, the American Feed Industry Association (AFIA) and the exhibition swine industry.

Participants in the project would evaluate and report aspects of their import practices for non-bulk ingredients, defined as ingredients packaged in 1 metric ton packaging or less originating from or undergoing transit through a region with a known presence of African swine fever virus (ASFV) and/or Classical swine fever virus (CSFV).

The reporting should include aspects regarding:

1. Traceability;
2. Biosecurity at origin
3. Biosecurity upon arrival in the United States
4. Requirements of quarantine facility and processes

**Intended Outcomes:**

At the conclusion of this pilot program, information will be summarized and presented to the US SHIP House of Delegates characterizing the current feed biosecurity practices being implemented by the US swine industry for import of non-bulk ingredients from ASF/CSF affected countries.

Based on these learnings through this pilot program, a framework of a national Biosecure Ingredient Imports program may be proposed for consideration and deliberation by the US SHIP House of Delegates.

RESOLUTION NUMBER: 2024 – 3  
SUBMITTED BY: US SHIP Site Biosecurity Feral Swine Mitigation Working Group  
SUBJECT MATTER: US SHIP Secure Pork Supply Plan Working Group Recommendations

WHEREAS, Secure Pork Supply Enhanced Site Biosecurity Plans are required for the commercial scale US SHIP Production Site Types to achieve and maintain the US SHIP ASF/CSF Monitored certification.

WHEREAS, The Secure Pork Supply Plan Site Biosecurity Plan for Pigs with Outdoor Access was determined to be the proper mechanism for producers with outdoor production to document their mitigation activities to limit the biosecurity threat due to contact with feral swine.

WHEREAS, US SHIP Site Biosecurity and Feral Swine Mitigation Working Group was tasked with working with the National Pork Board (NPB) Secure Pork Supply Working Group to advise revisions within Secure Pork Supply’s resources to include the incorporation of a feral swine mitigation plan for swine with outdoor access.

WHEREAS, The US SHIP Site Biosecurity and Feral Swine Mitigation Working Group, consisting of producers, academics, industry and regulatory representatives, have developed a list of potential recommendations for the NPB Secure Pork Supply Working Group to consider during their upcoming revision of the Secure Pork Supply Plan.

WHEREAS, US SHIP site biosecurity standards and recommendations must stay aligned with future revisions of the Secure Pork Supply Site Biosecurity Plans to ensure seamless execution of existing standards and the development of future standards.

WHEREAS, The most functional way to ensure the seamless transition is to ensure there is adequate representation of active members of the US SHIP Site Biosecurity Working Groups on the Secure Pork Supply Working Group.

Now, therefore be it RESOLVED:

The US SHIP House of Delegates requests the National Pork Board’s Secure Pork Supply Working Group to work with US SHIP leadership to ensure that any future revisions to the Secure Pork Supply Plans fit the needs of US SHIP Site Biosecurity now and in the future.



RESOLUTION NUMBER: 2024 – 4

SUBMITTED BY: US SHIP Traceability Work Group

SUBJECT MATTER: Extend the US Swine Health Improvement Plan (US SHIP), traceability pilot to support a national swine traceability approach by using and further developing “US SHIP Compliant Repositories of Inter-Premises Swine Movement Records” for capturing movement records of swine being moved interstate for further growing, breeding, or exhibition in near real-time across a number of US States.

WHEREAS, The US SHIP is an industry, state, and federal partnership that centers on establishing a national program for safeguarding, certifying, and bettering the health of US swine and the competitiveness of the US pork industry.

WHEREAS, The ability to proficiently track and trace inter-premises movements of live swine across the breadth of US pork industry participants is a foundational element of foreign animal disease preparedness.

WHEREAS, A resolution establishing the need for national mandatory swine traceability was approved at the 2024 Pork Forum.

WHEREAS, The US SHIP Resolution 2023-1 charged the US SHIP Traceability Working Group and requested the initiation use of “US SHIP Compliant Repositories of Inter-Premises Swine Movement Records” for swine traceability purposes.

WHEREAS, A pilot project was conducted with the engagement of small, medium, and large pork producers, 14 State Animal Health Offices, and two animal movement repositories, i.e., AgView housed at National Pork Board and RABapp housed at North Carolina State University.

WHEREAS, The pilot has provided an opportunity for stakeholder engagement, the establishment of working relationships between engaged parties, gap identification and opportunity for correction, and general traceability improvements across engaged stakeholders.

WHEREAS, The pilot has identified that the establishment of “US SHIP Compliant Repositories of Inter-Premises Swine Movement Records” is feasible, albeit there is still a need for considerable advancements for complete animal movement data collection by producers and further development of build-for-purpose capacities for efficient and securely deliverable of animal movement data, making it readily available to State Animal Health Officials.

Now, therefore be it RESOLVED:

The US SHIP House of Delegates requests the continued pursuit of a demonstration project across a substantive subset of US SHIP pork industry participants, industry stakeholders, state animal health officials (SAHOs), and US SHIP official state agencies for using and further developing “US SHIP Compliant Repositories of Inter-Premises Swine Movement Records” for capturing movement records of swine being moved interstate for further growing, breeding, or exhibition in near real-time.

Specifically, within this continued demonstration project, efforts should be directed towards increasing the breadth of representation and engagement, including further discussions with program participants (Producers), State Animal Health Officials, US SHIP Official State Agencies, entities responsible for managing/providing services of “US SHIP Compliant Repositories of Inter-Premises Swine Movement Records”, and the individuals representing the databases applications being used.

Participants in the project would evaluate and report aspects towards using and further developing “US SHIP Compliant Repositories of Inter-Premises Swine Movement Records” towards supporting national swine traceability, with emphasis and focusing on improving data capture quality and promptly delivering such information in a user friendly format to the appropriate State Animal Health Official and US SHIP Official State Agency.

The swine traceability reporting should include aspects regarding traceability advancements from:

- Program participants (Producers)
- State Animal Health Officials
- Official State Agencies
- Entities responsible for managing/providing services of the Repository in this initiative.
- Individuals representing the database applications used to support the services being provided.

**Intended Outcomes:**

The continued traceability efforts would identify gaps, offer an opportunity for correction, and provide information that can support data-driven decisions to guide further the advancements toward national-scale traceability in the swine industry. Learnings from this pilot will be presented at the US SHIP House of Delegates and can be further used as a framework to support the advancement and implementation of a national swine traceability program.

RESOLUTION NUMBER: 2024 – 5

SUBMITTED BY: US SHIP Traceability Work Group

SUBJECT MATTER: Requesting subset of State Animal Health Officials (SAHO) to commission a working group to define and propose a path forward for enabling producers to utilize the services of US SHIP Compliant Repositories of Inter-Premises Movement Records to meet the swine movement record reporting requirements of Swine Production Health Plans (SPHP) or Certificates of Veterinary Inspection across a breadth of US states with significant pork production operations

WHEREAS, The US SHIP is an industry, state, and federal partnership that centers on establishing a national program for safeguarding, certifying, and bettering the health of US swine and the competitiveness of the US pork industry.

WHEREAS, The ability to proficiently track and trace inter-premises movements of live swine across the breadth of US pork industry participants is a foundational element of foreign animal disease preparedness.

WHEREAS, Movement records of swine being moved interstate for the purposes of further breeding, growing, or exhibition have long been required to be reported to the State Animal Health Official of the state of destination in accordance with Swine Production Health Plans (SPHPs) or Certificates of Veterinary Inspection (CVIs).

WHEREAS, The methods used, required fields, format, and the degree of sophistication in which such interstate movement records of swine are captured and archived are highly variable within and across US states. As such, these inter-premises movement records are commonly not well-suited to support highly scalable or proficient track and trace procedures.

WHEREAS, Enabling producers to utilize the services of capable US SHIP Compliant Repositories of Inter-Premises Swine Movement Records as a means to meet the swine movement record reporting requirements of Swine Production Health Plans (SPHPs) or Certificates of Veterinary Inspection (CVIs) would create a tangible and sustainable business use case for producers and states to adopt the use of the common standards and technologies that are needed to establish a truly capable national system of traceability across the US pork industry.

Now, therefore be it RESOLVED:

The US SHIP House of Delegates request a subset State Animal Health Officials from US SHIP participant states to commission a working group to define and propose a path forward for enabling producers to utilize the services provided by US SHIP Compliant Repositories of Inter-Premises Movement Records as acceptable means for producers to meet the swine movement record reporting requirements of Swine Production Health Plans (SPHPs) or Certificates of Veterinary Inspection (CVIs) across a breadth of US states with significant pork production operations.

**Intended Outcomes:**

Create a pathway forward for a tangible and sustainable business use case for producers and states to adopt the use of the common standards and technologies that are needed to establish a truly capable national system of traceability across the US pork industry.

RESOLUTION NUMBER: 2024 - 6

SUBMITTED BY: The American Association of Swine Veterinarians and the Delegation from the State of Minnesota

SUBJECT MATTER: Explore the potential for PEDV certification in US SHIP.

WHEREAS, The US Swine Health Improvement Plan (US SHIP) is an industry, state, and federal partnership that centers on establishing a national program for safeguarding, certifying, and bettering the health of US swine and competitiveness of the US pork industry.

WHEREAS, The initial scope of US SHIP has been focused on establishing the ASF/CSF Monitored certification.

WHEREAS, The development of a platform for certifying the health of US swine being established in US SHIP could be leveraged to certify and mitigate the impact of any number of endemic diseases of high consequences to the US pork industry.

Now, therefore be it RESOLVED:

The US SHIP House of Delegates requests the US SHIP staff and stakeholders to work collaboratively with the PEDV centered working groups recently established by the American Association of Swine Veterinarians and the National Pork Board to evaluate the next steps and potential for introducing a PEDV health status certification within US SHIP to be considered by the 2025 US SHIP House of Delegates.

**Clarification:**

The ASF/CSF Monitored certification is the baseline and only required certification within US SHIP (similar to the Salmonella pullorum being the baseline certification in NPIP). Additional certifications for endemic diseases such as PEDV are envisioned to be optional and utilized by participants in an ala-carte fashion. Therefore, a participant currently certified as ASF/CSF Monitored would not be required to participate in a PEDV certification to remain certified as ASF/CSF Monitored.

RESOLUTION NUMBER: 2024 - 7

SUBMITTED BY: Delegation from the State of Indiana

SUBJECT MATTER: General Conference Committee (GCC)

WHEREAS, The GCC serves an important role in representing the interests of swine producers, livestock marketing operations, and slaughter facilities as the advisory body to the US SHIP program administrators.

WHEREAS, US SHIP activities have such a strong connection to regulatory veterinary medicine that GCC members could benefit from the perspective of a State Animal Health Official.

Now, therefore be it RESOLVED:

The US SHIP House of Delegates supports a recommendation to USDA to include a non-voting GCC position for a State Animal Health Official on a rotating basis.

# US SHIP Classifications, Delegate Allocation, and Governance

---

## I. US SHIP Classifications (6 groupings, for delegate allocation)

1. Breeding Herd: Sites:  $\geq 1,000$  breeding females or  $\geq 50$  mature boars (Inventory)
2. Growing Pig: Sites:  $\geq 1,000$  post-weaned pigs (Inventory)
3. Slaughter Facility: Slaughter  $\geq 100,000$  pigs / year
4. Small Holdings: Farm sites with  $\geq 100$  post-weaned pigs (Inventory) that don't fit into any of the other commercial farm site categories.
5. USDA or State Inspected slaughter facilities slaughtering  $< 100,000$  pigs / year
6. Non-commercial: Production sites with  $\leq 100$  pigs. (e.g., exhibition, niche)
7. Live Animal Marketing Operations: Sites that aggregate swine for resale of such swine ( $> 100$  pigs/week) onto slaughter facilities.

Notes:

<sup>1</sup> Farrow-to-Finish or Farrow-to-Feeder sites  $\geq 1,000$  breeding females will be classified as Breeding Herds.

<sup>2</sup> Farrow-to-Finish or Farrow-to-Feeder sites  $< 1,000$  breeding females will be classified as Small Holdings.

<sup>3</sup> Boar Stud sites ( $> 50$  mature/working boars) will be classified as Breeding Herds for delegate allocation purposes.

US SHIP Classifications are important as it relates to ensuring appropriate representation from the various segments of US pork industry and in the delegate allocation process.

Such US SHIP Classifications (and associated definitions) also create clarity for the states as to “who to ask” when seeking industry stakeholder volunteers to serve as delegates in representing the interests of a particular “Classification or Segment” of the industry in the US SHIP House of Delegates.

However, there will not be any “Classification Specific” votes cast at the US SHIP House of Delegates Meeting to be held on September 3 - 5, 2024 in Bloomington, MN.

## II. Overview of US SHIP Delegate Allocation

**Formula based approach = (Base Allocation & Distribution of At Large Delegates)**

### **Brief Description of Methodology Used For Delegate Allocation:**

This formula-based approach uses a combination of a baseline allocation of delegates to all participating states, as well as the generation and subsequent distribution of a pool of At-Large Breeding Herd and Growing Pig delegates based upon the percentage of Breeding Swine and Growing Pigs (respectively) participating in US SHIP that are located in the state.

The formula-based approach is structured such that the number of At-Large delegates increase in direct proportion to the number of states participating in the US SHIP.

### **Detailed Description with Explanation:**

1. Participating states will be allotted a minimum base of 4 voting delegates, one delegate (vote) for each of the following 4 US SHIP Classifications: Non-commercial, Small Commercial, Breeding Herd, and Growing Pig. A state will receive 1 additional voting delegate for the classification slaughter if they have an active slaughter facility operating in their state, for a total of 5 voting delegates.
  2. A pool of At-large delegates will be generated for allocation to the states. Two At-large delegates (1 Breeding Herd delegate and 1 Growing Pig delegate) will be generated for each state participating in the US SHIP House of Delegates.
- For example:
- a. If 25 states participate, a pool of 25 Breeding Herd and 25 Growing Pig At-Large delegates (votes) will be generated for allocation.
3. The pool of At-large delegates will be allocated to states as a percentage of all Breeding Swine and Growing Pigs (respectively) ***enrolled*** in US SHIP that are located in a given state.

For example:

- a. Using example above of 25 participating states: If a state had 4% of the Breeding Swine inventory and 8% of the Growing Pig inventory ***enrolled*** among participating states, they would be allocated 1 additional Breeding Herd delegate and 2 additional Growing Pig delegates.



4. Live Animal Marketing Operation delegates: The 15 states that generate the most Breeding and Growing Pig at large delegates (combined) will each have one Live Animal Marketing Operation delegate allocated to their respective state's delegation. The Live Animal Marketing Operation delegate is an additional delegate invitation being extended to the 15 states that generate the most Breeding and Growing Pig at large delegates (combined).

**Note:** Since US SHIP currently in the start-up phase, the number of Breeding Swine and Growing Pigs enrolled (versus certified) at the end of June 2024 is being used to allocate the Breeding Herd and Growing Pig At-Large Delegates (respectively) for the 4<sup>th</sup> US SHIP House of Delegates meeting.

### III. Delegate Allocation for 2024 US SHIP HOD (Enrollment as of 7/15/2024)

36 states have demonstrated interest in US SHIP

State	Non-commercial	Small commercial	Breeding herd	Growing	Slaughter	Live Marketing	Total
Alabama	1	1	1	1	0	0	4
Arizona	1	1	1	1	0	0	4
Arkansas	1	1	1	1	0	0	4
California	1	1	1	1	0	0	4
Colorado	1	1	2	1	0	1	6
Delaware	1	1	1	1	0	0	4
Florida	1	1	1	1	0	0	4
Georgia	1	1	1	1	0	0	4
Hawaii	1	1	1	1	0	0	4
Illinois	1	1	4	3	1	1	11
Indiana	1	1	3	3	1	1	10
Iowa	1	1	6	13	1	1	23
Kansas	1	1	2	2	1	1	8
Kentucky	1	1	2	1	1	0	6
Louisiana	1	1	1	1	0	0	4
Michigan	1	1	2	2	1	1	8
Minnesota	1	1	4	5	1	1	13
Mississippi	1	1	1	1	0	0	4
Missouri	1	1	3	3	1	1	10
Montana	1	1	1	1	0	0	4
Nebraska	1	1	3	2	1	1	9
North Carolina	1	1	7	7	1	1	18
North Dakota	1	1	1	1	0	0	4
Ohio	1	1	3	2	1	1	9
Oklahoma	1	1	4	2	1	1	10
Oregon	1	1	1	1	1	0	5
Pennsylvania	1	1	1	2	1	1	7
South Carolina	1	1	1	1	0	0	4
South Dakota	1	1	3	2	1	1	9
Tennessee	1	1	1	1	1	0	5
Texas	1	1	2	2	1	1	8
Utah	1	1	1	1	0	0	4
Virginia	1	1	1	1	1	0	5
West Virginia	1	1	1	1	0	0	4
Wisconsin	1	1	1	1	1	0	5
Wyoming	1	1	1	1	0	0	4
<b>Total</b>	<b>36</b>	<b>36</b>	<b>71</b>	<b>72</b>	<b>19</b>	<b>15</b>	<b>249</b>

## IV. Other US SHIP Governance Items

1. Voting delegates representing each participating state will be appointed by each participating state's pork producer association. If a participating state does not have an active pork producer association, delegate selection will be deferred to the respective State Animal Health Official or Department of Agriculture.
2. The State Animal Health Official or their designee is to serve as one of the voting delegates among their respective state's delegation at the US SHIP House of Delegates.
  - This is not an additional delegate and does not have any implication on the number of delegates being allocated for use by participating states.
  - This language is included simply to clarify the importance of the SAHO's (and/or respective State Department of Agriculture's or Board of Animal Health's) role and engagement with this US SHIP development project in their respective state.
  - The SAHO's or their designee's engagement in US SHIP and the US SHIP House of Delegates process is highly important.
3. Delegates must be present to vote at the US SHIP House of Delegates.
4. Individual delegates attending the US SHIP House of Delegates cannot cast more than one vote or cast votes on other delegates' behalf (i.e., one person/delegate = one vote).
5. States are not required to have representation or be present at the US SHIP House of Delegates to participate in the US SHIP.
6. Definitions of US SHIP Program Standards vs Resolutions:
  - US SHIP Program Standard = Requirements to be met or exceeded by program participants to be certified in US SHIP.
  - US SHIP Resolution = Charges to pursue initiatives or further explore specific issues that aim to further inform US SHIP program content and direction.
7. Approval of new or amendments to existing Program Standards require a super-majority (> 2/3) of votes cast.
8. Approval of Resolutions require simple majority (> 1/2) of votes cast.
9. Amendments to both Standards and Resolutions can be brought forth as long as such amendment remains within the scope under consideration.
10. Motions for new Standards or Resolutions which have not been vetted and previously circulated to delegates will not be considered for vote but instead tabled for further review and consideration.