



# **US Swine Health Improvement Plan**

# **Resolutions**

Updated after 3rd House of Delegates Meeting  
September 5 - 7, 2023

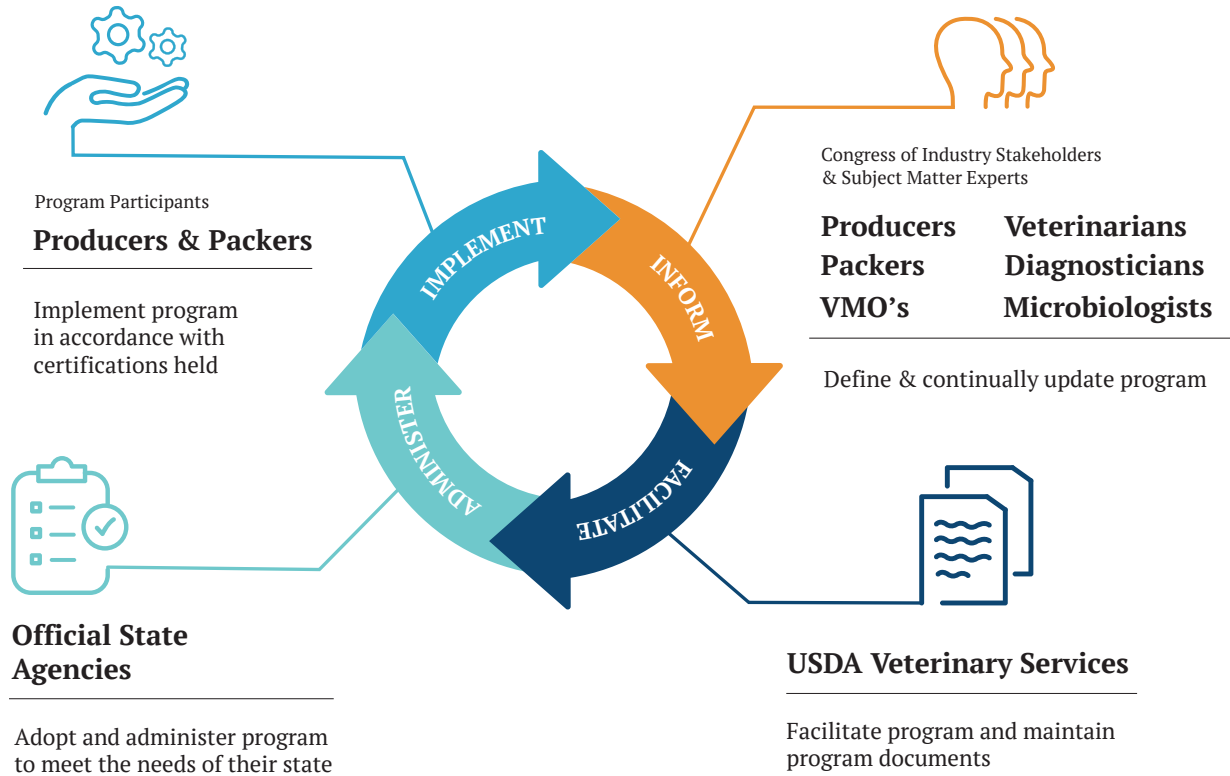


# US Swine Health Improvement Plan



## ASF-CSF Monitored Certification

“A proven platform for safeguarding, certifying, and bettering animal health”



## Industry, State, & Federal Partnership

Pathway for improving preparedness across US Pork Industry

US SHIP will establish a **National Playbook** of technical standards centering on **Prevention** and **Demonstration of Freedom of Disease** Outside of Control Areas in Support of Animal Health, Commerce, and Trade.

## Biosecurity, Traceability, and Disease Surveillance

# Resolutions

---

**Definition: Resolutions:** Charges to pursue initiatives or further explore specific issues that aim to further inform US SHIP program content and direction.

Approval of Resolutions require majority vote by the US SHIP HOD.

The proposed Resolutions represent some portion of the work product and recommendations of US SHIP Technical Working Groups centering on topics related to Biosecurity, Traceability, and Sampling and Testing convened in the spring 2023. The principal charges provided to the various working groups stem back to the series of Resolutions passed at the US SHIP HOD 2022.

It should be understood that US SHIP is an industry, state, and federal partnership en-route to be a USDA Swine Health Program (modeled after NPIP's longstanding system of shared governance) that centers on certifying the health of US swine in accordance with well-defined program standards.

Any project-based work involving research, new system development, collaborative forums, outreach, education, and advocacy for US SHIP related efforts are only possible through the support and self-evident synergies working in partnership with the national pork producer, packer, and swine veterinary organizations (i.e., National Pork Board, National Pork Producers Council, Swine Health Information Center, North American Meat Institute, and the American Association of Swine Veterinarians).

RESOLUTION NUMBER: 2023 – 1

SUBMITTED BY: US SHIP Traceability Working Group

*Introductory Note from Submitters:*

*The US SHIP Traceability Working Group recognizes this concept of utilizing the services of an active / working “US Compliant Repository of Inter-Premises Swine Movement Records” as described and proposed here is complex.*

*This concept will require further explanation and significant discussion amongst industry, state, and federal partners at the US SHIP HOD. US SHIP HOD meeting participants are encouraged to take time to study this Resolution, Addendum I, and Addendum II in detail prior to the meeting.*

SUBJECT MATTER: Utilization of a “US SHIP Compliant Repository of Inter-Premises Swine Movement Records” for Capturing Movement Records of Swine Being Moved Interstate for Further Growing, Breeding, or Exhibition in Near Real-Time Across a Number of US States.

WHEREAS, The US pork industry is highly dependent on interstate pig movement and the ability to export pork products.

WHEREAS, The ability to proficiently track and trace inter-premises movements of live swine across the breadth of US pork industry participants is a foundational element of foreign animal disease preparedness.

WHEREAS, In the event of an animal health emergency, such proficiencies are critical in being able to competently represent the health status of pigs and maintain the continuity of business across supply chains, areas, states, and regions over an extended response and recovery period,

WHEREAS, Current capabilities to proficiently track and trace the masses of swine moving intra and interstate is a well-recognized “mission critical foreign animal disease preparedness vulnerability” for the greater expanse of the US pork industry,

WHEREAS, Scalable approaches for being able to capably track and trace inter-premises movements of live swine in

near real-time (within 7- days of movement) have become commonplace in various shapes and forms in pork exporting countries throughout the world. Such capabilities have been developed over the course of time as an outcome of being routinely implemented as a market-driven or compulsory requirement within their respective countries (i.e., figured out what works by doing/implementing),

WHEREAS,

The 2022 US SHIP HOD charged a multidisciplinary working group of industry, state, and federal partners to more fully vet:

a. Alternative approaches that could be taken towards meeting a prescribed standard requiring reporting inter-premises movements of swine to a “US SHIP Compliant Repository of Inter-Premises Swine Movement Records” within 7- days of movement.

b. The requirements, functionality, and operational covenants necessary for entities to be recognized and function as a “US SHIP Compliant Repository of Inter-premises Swine Movement Records.”

WHEREAS,

Movement records of swine being moved interstate for the purposes of further breeding, growing, or exhibition have long been required to be reported to the State Animal Health Official of the state of destination in accordance with a Certificate of Veterinary Inspection or Swine Production Health Plan.

WHEREAS,

The methods used, format, and the degree of sophistication in which such interstate movement records of swine are captured and archived are highly variable within and across US states. As such, these inter-premises movement records are commonly not well-suited to support highly scalable or proficient track and trace procedures.

WHEREAS,

National Pork Board has developed AgView for the purpose of providing a National Swine Movement Repository that includes all swine movement data, including interstate movements.

WHEREAS,

National Pork Board is currently developing AgView to be a repository for Swine Production Health Plans which includes the sharing of movement records of swine moving interstate for purposes of further growing or breeding within a production system.

WHEREAS,

Furthering developing and evaluating this concept of participants using a “US SHIP Compliant Repository of Inter-Premises Swine Movement Records” utilizing movement records of swine that already have to be reported to the State Animal Health Officials of the state of destination would seem like a logical place to start, learn from, build stakeholder confidence and competence in using, and further inform next steps in a journey towards establishing a 21<sup>st</sup>-century system of traceability in the US pork industry.

**Now, therefore be it RESOLVED:**

The US SHIP House of Delegates requests the initiation of the use of a “US SHIP Compliant Repository of Inter-Premises Swine Movement Records” (**Pictorialized in Addendum 1**) to capture movement records of swine being moved interstate for the purposes of further breeding, growing, or exhibition in near-real time by a number of US states.

**Be it further RESOLVED:**

The permissioned database application used and the entity responsible for managing and providing the services of the “US SHIP Compliant Repository of Inter-premises Swine Movement Records” in this proposed pilot project are to meet or exceed a baseline set of operational covenants and functionality requirements drafted by the US SHIP Traceability Work Group in 2023 (**Described in Addendum 2**).

**Be it further RESOLVED:**

The entity responsible for managing and providing the services of a “US SHIP Compliant Repository of Inter-premises Swine Movement Records” in this proposed pilot project is accountable for providing customer support services to both the **Industry Participants** responsible for depositing the movement records into the Repository as well as the **Permissioned Users** (i.e., State Animal Health Officials and US SHIP Official State Agencies) of the US SHIP Compliant Repository of Inter-premises Swine Movement Records.

**Note:** The entity responsible for managing and providing the services of a “US SHIP Compliant Repository of Inter-premises Swine Movement Records” for this pilot project is envisioned to function as a “Bureau of Inter-Premises Swine Movement Records”.

**Be it further RESOLVED:**

The US SHIP House of Delegates requests that pork producers and states that import the largest number of pigs for growing, breeding, and exhibition actively participate in this pilot project and work collaboratively in such a way that the services provided by a “Repository of Inter-premises Swine Movement Records” meet the requirements for reporting such interstate movements of swine into each participating state.

**Be it further RESOLVED:**

The US SHIP House of Delegates requests representatives of the US SHIP Traceability Working Group, individual(s) who represent the application used to support services being provided, and participating State Animal Health Officials work in unison to further develop and utilize a built for purpose module within the AgView™ database application (developed by National Pork Board) and also with other software/database(s) interested in serving as a US SHIP compliant repository the accompanying software support services to be used by the entity (Bureau of Inter-Premises Swine Movement Records) determined to be responsible for managing and providing the services of the “Repository of Inter-premises Swine Movement Records” utilized in this proposed initiative.

**Be it further RESOLVED:**

The US SHIP House of Delegates requests a progress report of the learnings, outcomes, and ongoing operations of this pilot initiative to be presented to the 2024 US SHIP HOD.

Progress report to be inclusive of feedback from:

- Program participants (Producers)
- State Animal Health Officials
- Official State Agencies
- Entity responsible for managing/providing services of the Repository in this initiative.
- The software/database individual(s) who represent the application used to support services being provided.

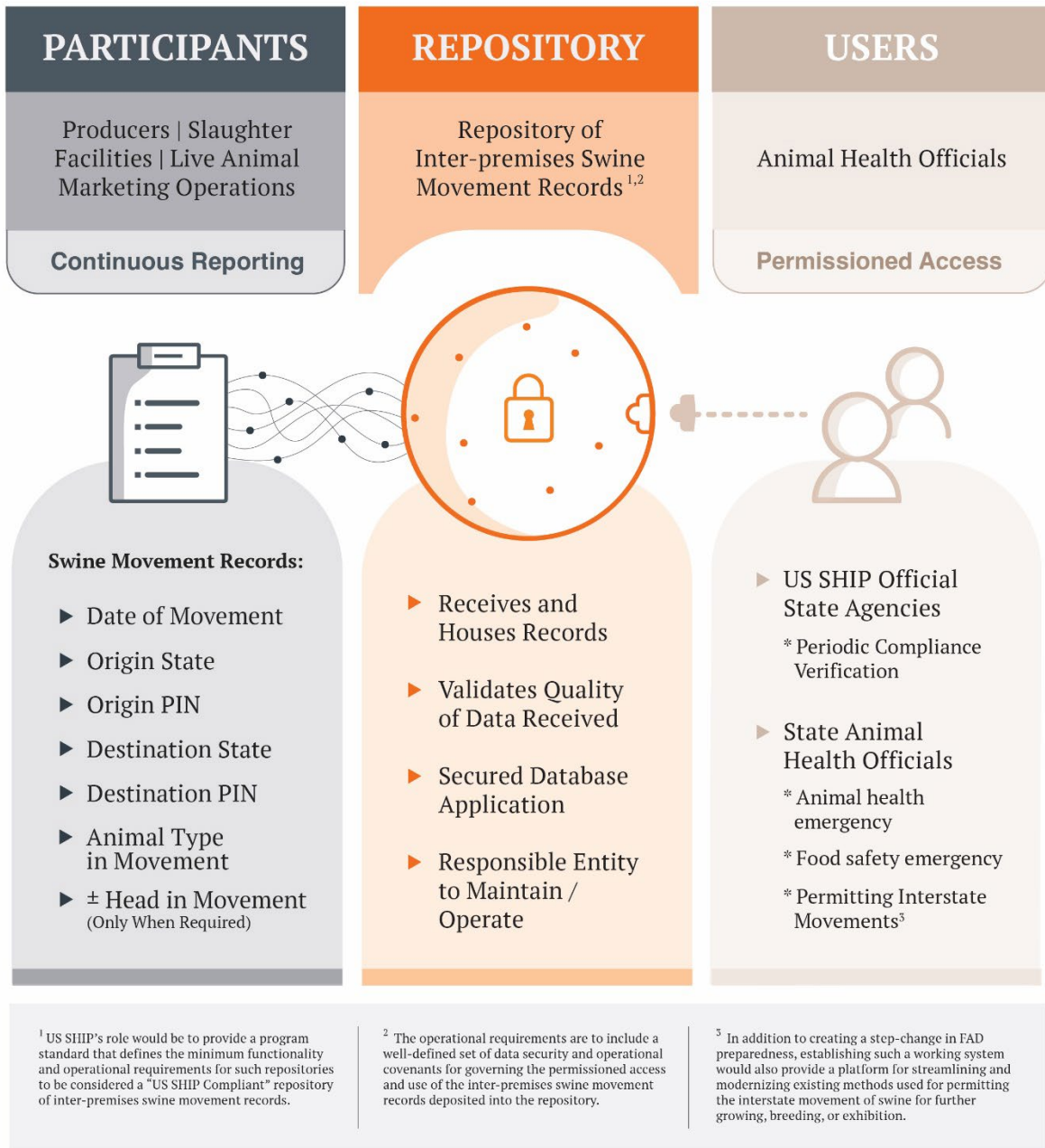
***Additional Note of Explanation:***

It should be understood that this concept of industry participants depositing inter-premises swine movement information into active / working “US Compliant Repository of Inter-Premises Swine Movement Records” for specified use cases is independent of the software or other tools being used by program participants to generate and house the more detailed inter-premises swine movement records for their own operational specific management purposes.

## Addendum 1

# A Model For Proficiently Capturing and Securing Inter-Premises Swine Movement Records in Near Real-Time

*“A Potential Pathway to 21st Century Traceability across US Pork Industry”  
 “Capable of Providing for a True Step Change in FAD Preparedness”*





## Addendum 2

### US SHIP Compliant Repository of Inter-Premises Swine Movement Records

#### Initial Set of Operational Covenants and Functionality Requirements for Pilot<sup>1</sup>:

- **Managing Entity** (i.e., Bureau of Inter-premises Swine Movement Records)
  - Repository of Inter-premises Swine Movement Records must have a Managing Entity responsible for provision of services provided:
    - Maintain and operate the functions of the Repository.
    - Provide customer support services to the **Industry Participants** responsible for depositing data into the Repository as well as the **Permissioned Users** of the Repository.
  
- **Database Requirements of Repository:**
  - Provides Participants one or more options (methods) to electronically deposit inter-premises swine movement records that have occurred into the Repository.
  - Validates data fields of the movement records to ensure the completeness of records housed in the Repository.
  - Securely houses the inter-premises swine movement records deposited into the Repository.
  - Provides permissioned access to the inter-premises swine movement records deposited into and housed in the Repository to the appropriate US SHIP Official State Agencies and State Animal Health Officials for well-defined purposes / use cases.

Provides permissioned connectivity (e.g., via permissioned access API) enabling the capabilities for seamless sharing of the inter-premises swine movement records housed in the “US SHIP Compliant Repository of Inter-premises Swine Movement Records” to the various Animal Health Program Management Database Applications (e.g., USA Herds, Trace First, and EMERS, etc.) being used by the State Animal Health Officials to manage the animal health regulatory functions and emergency disease responses activities in their respective state.
  - Provides technical (software) support of the database application used.

- **Permissioned Data Sharing of the Inter-premises Swine Movement Records Deposited into and Housed in the Repository:**
  - US SHIP Official State Agencies are to be provided access to the movement records of participating premises within their respective state for the purposes of periodically confirming compliance with the reporting requirements necessary for program participants to ascertain or maintain compliance with the US SHIP certification(s) held.
  - State Animal Health Officials are to be provided access to the interstate movements records of swine moving into their state in such a manner that meets the reporting requirements of their respective state.
  - In the event of a confirmed introduction of ASF or CSF into the US, State Animal Health Officials are to be provided access to the inter-premises swine movements occurring within, into, or out of their state for purposes of supporting the trace-in / trace-out procedures associated with FAD response related efforts.
  - Data-sharing beyond purposes outlined above is strictly prohibited.

<sup>1</sup> These Operational Covenants and Functionality Requirements of a “US SHIP Compliant Repository of Inter-premises Swine Movement Records” for use in the proposed initiative were drafted by a US SHIP Working Group on Traceability in 2023. The experiences gained via implementing the proposed initiative aim to further inform an initial set of Operational Covenants and Functionality Requirements of a “US SHIP Compliant Repository of Inter-premises Swine Movement Records” to be brought forth for consideration and vote by a future US SHIP HOD.

RESOLUTION NUMBER: 2023 – 2

SUBMITTED BY: Rodger Main (Interim US SHIP GCC Member)

SUBJECT MATTER: Establishment of a US SHIP Exhibition Swine Working Group that centers on developing a well-informed and sustainable (long-term) strategy for engaging and encouraging participation among the exhibition swine community.

WHEREAS, Pork producers breeding and growing pigs that are being exhibited at local, regional, or national exhibitions are a highly important component of the US pork industry.

WHEREAS, Developing this US SHIP ASF-CSF Monitored certification program in such a way that encourages high rates of participation across the full-spectrum of industry participants is a foundational element necessary for protecting and being able to represent the health status of domestic pig production operations across supply chains, areas, states, and regions.

WHEREAS, Pork production operations of all shapes and sizes share the common interests of wanting to protect the health of the pigs within their care and maintain the ability to readily move hogs within or across state lines for the purposes of further growing, breeding, exhibition, or sale over the course of a trade impacting disease response and recovery period.

WHEREAS, In addition to creating a step-change in foreign animal disease preparedness, establishing this US SHIP ASF-CSF Monitored certification also presents as a platform that could be used to streamline and modernize existing methods used for routinely permitting the interstate movement of swine for further growing, breeding, or exhibition in the future.

**Now, therefore be it RESOLVED:**

The US SHIP House of Delegates requests the establishment of a US SHIP Exhibition Swine Working Group that centers on developing a well-informed and sustainable (long-term) strategy for engaging and encouraging participation amongst the exhibition swine community in the US SHIP.

This US SHIP Working Group should be led by and consist principally of pork producers that are active and thought leaders in the US exhibition swine community, along with advisement of a practicing veterinarian who routinely provides services to the exhibition swine clientele, a State Animal Health Official, and member of the USDA APHIS swine staff.

US SHIP Program Administration (inclusive of the Exhibition Swine Member on the General Conference Committee to be elected at the 2023 US SHIP HOD) are to seek guidance on ascertaining producers interested in volunteering their time to serve on this working group from the National Swine Registry, Certified Pedigree Swine, American Berkshire Association, National FFA and 4-H Organizations, State Pork Association(s) with a highly active exhibition swine community, and the National Pork Board.

**Intended Outcomes:**

A well-documented set of recommendations and guidance to be provided to the US SHIP Program Administration, US SHIP General Conference Committee, US SHIP Official State Agencies, and be shared, presented, and discussed more broadly at the 2024 US SHIP House of Delegates.

RESOLUTION NUMBER: 2023 – 3

SUBMITTED BY: US SHIP Feral Swine Mitigation Working Group

SUBJECT MATTER: Integration of Feral Swine Mitigation Plan into Secure Pork Supply Plan

WHEREAS, The US Swine Health Improvement Plan (SHIP) is a collaborative effort involving industry, state, and federal officials tasked with establishing a “national playbook” of technical standards associated with biosecurity, traceability, and sampling/testing,

WHEREAS, The 2022 US SHIP HOD passed a resolution to commission a working group to further define mitigation measures to minimized the threat of direct contact of feral swine to US-SHIP participating sites,

WHEREAS, A completed Secure Pork Supply Enhanced Biosecurity Plan is a program requirement for certification in US-SHIP for boar studs, breeding herds, growing pig and farrow to feeder/finish sites.

WHEREAS, The Secure Pork Supply Plan is scheduled to undergo a review and possible revision to its program standards beginning in 2024.

WHEREAS, A recently completed literature review established that the likelihood of ASF disease transmission from direct contact between feral swine and swine with outdoor access was significantly higher than with swine housed indoors,

Now, therefore be it

RESOLVED, The US SHIP House of Delegates requests the commissioning of a working group to work with the National Pork Board Secure Pork Supply Working Group to advise revisions within Secure Pork Supply’s resources to include the incorporation of a feral swine mitigation plan for animals with outdoor access.

RESOLUTION NUMBER: 2023 - 4

SUBMITTED BY: US SHIP Sampling & Testing Work Group

SUBJECT MATTER: Developing a Pathway for Incorporating the USDA ASF/CSF Active Surveillance of Case Compatible Submissions to Veterinary Diagnostic Labs into US SHIP Sampling and Testing.

**Initial Target / Focus:**

Peacetime= Risk Level 1, ASF/CSF not present in US

WHEREAS, USDA APHIS initiated the ASF/CSF Active Surveillance Program of case compatible submissions made to veterinary diagnostic labs (i.e., labs in the USDA National Animal Health Laboratory Network) in 2019 in response to the growing risks of ASF globally,

WHEREAS, the USDA ASF/CSF Active Surveillance Program in NAHLN labs has continued to evolve overtime and provides for a very targeted and efficient means for contributing to the ASF/CSF surveillance of US Swine,

WHEREAS, incorporating the use of the USDA ASF/CSF Active Surveillance of case compatible submissions to veterinary diagnostic labs in the US SHIP ASF/CSF Monitored certification program presents as an opportunity to leverage this existing surveillance stream and further enhance the breadth and depth of benefits and overall effectiveness of the ASF/CSF surveillance of US swine and overall FAD preparedness without placing additional costs or administrative burden upon participants,

WHEREAS, including the Premises Identification Number (PIN) in the veterinary diagnostic record of case compatible submissions is the key element needed to provide a seamless means of incorporating the use of this existing surveillance stream into the US SHIP ASF/CSF Monitored certification program,

## **Now, therefore be it RESOLVED:**

The US SHIP House of Delegates requests the US SHIP Program Administration to work with USDA Swine Health Program Staff, USDA NAHLN, and CEAH to establish a process for and begin reporting the number of samples and premises being surveilled (tested) for via the USDA ASF/CSF Active Surveillance of case-compatible submissions to USDA NAHLN labs that are originating from US SHIP ASF/CSF Monitored premises.

The principle objective (ask) is to get this system established in the coming year with the aim of having this ASF/CSF active surveillance stream incorporated into the US SHIP ASF/CSF peacetime surveillance by April 1, 2024 (i.e., approximately 6-months from 2023 US SHIP HOD).

Key components of reporting:

- Aggregate level surveillance data to be summarized overall and by state of origin.
  - State of origin = State in which the US SHIP participant premises from which the clinical samples tested originate is located.
- Aggregate level summary information to be made available to broader US SHIP stakeholder audiences.
- US SHIP Official State Agencies and State Animal Health Officials Premises are to be provided access to the total number and specific US SHIP participating premises being surveilled via this surveillance stream in their state.

See Addendum attached for reference: Basic description of the envisioned process for incorporating the use of the ASF/CSF Active Surveillance into the US SHIP ASF/CSF Monitored certification program.

## **Be it further RESOLVED:**

The US SHIP House of Delegates requests the US SHIP Program Administration to work in partnership with US animal health and pork industry organizations to raise pork producer/veterinary practitioner/diagnostician awareness, understanding (how to), and participation in the USDA ASF/CSF Active Surveillance of US Swine via submission of case-compatible submissions to USDA NAHLN labs.

**Note:** Participation in US SHIP and including adequate case history information and the premises identification number (PIN) of the premises of origin on case-compatible submissions to USDA NAHLN labs are the key US pork industry participant responsibilities for optimizing the value and successfully incorporating this surveillance into US SHIP.

USDA APHIS is currently funding the ASF/CSF PCR testing costs of this ASF/CSF Active Surveillance of case-compatible submissions at USDA NAHLN labs.

## Addendum

Basic description of the envisioned process for incorporating the use of the ASF/CSF Active Surveillance into the US SHIP ASF/CSF Monitored certification program; pictorialized below in Figure 1.

1. US SHIP participants submit case-compatible submissions to veterinary diagnostic labs in the National Animal Health Lab Network certified to conduct ASF/CSF testing.

Case-compatible submissions include:

- Adequate case history information of clinical signs being observed.
- Appropriate samples from clinically affected pigs sampled (e.g., spleen, tonsil, lymph-nodes, spleen-pulp swabs, blood swabs, or whole blood).
- Complete premises-level demographic information of the site of origin (e.g., minimally Site Name, Premises Identification Number (PIN) and State)

**Note:** The USDA is currently funding the ASF/CSF PCR testing costs of this ASF/CSF Active Surveillance of case-compatible submissions at veterinary diagnostic labs in the National Animal Health Lab Network certified to conduct ASF/CSF testing.

2. USDA NAHLN labs message test results and associated demographic information message to USDA (i.e., to NAHLN Laboratory Messaging Service, or LMS).

3. USDA utilizes this information received into LMS to ping the US SHIP Site Status Verification Database Application to retrieve the US SHIP ASF/CSF Monitored site status (i.e., US SHIP ASF/CSF Monitored or Not) to the premises level test result record.

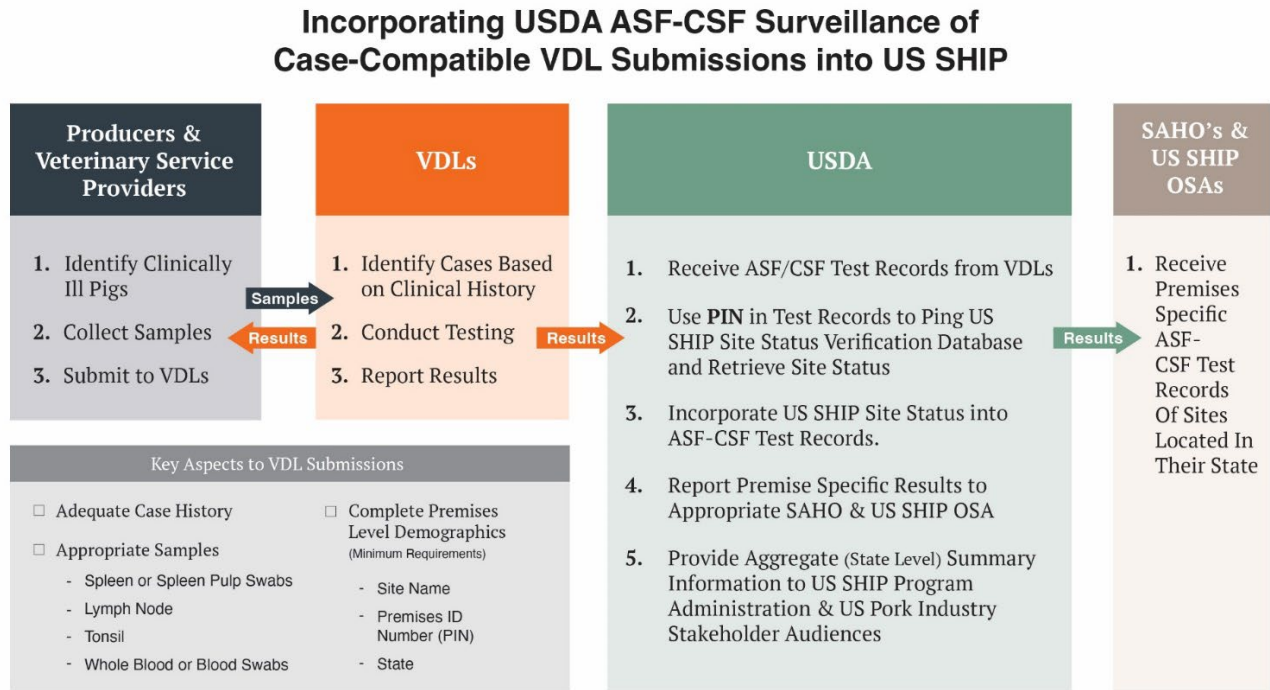
4. USDA responsible for providing the US SHIP Official State Official State Agency and the State Animal Health Official access to the total number and specific US SHIP participating premises being surveilled via this surveillance stream in their state.

5. USDA / US SHIP Program Staff responsible for reporting the aggregate level summary data illustrating the total number of samples tested and US SHIP ASF-CSF Monitored premises surveilled via this stream each month / quarter / year.

**Note:** This proposed Resolution (“Developing a Pathway for Incorporating the USDA ASF/CSF Active Surveillance of Case Compatible Submissions to Veterinary Diagnostic Labs into US SHIP Sampling and Testing”) does not have any impact on the means (current standard practices used) in which Submitting Veterinarians and Program Participants are routinely receiving test result information from their veterinary diagnostic lab service providers.



**Figure 1.** Incorporating the current USDA ASF/CSF active surveillance of case-compatible VDL submissions into the US SHIP ASF/CSF Monitored certification program.



RESOLUTION NUMBER: 2023 - 5

SUBMITTED BY: MN Delegation

SUBJECT MATTER: The US SHIP Site Status Verification Data Base

**RESOLUTION:**

There is strong support for the objectives of a US SHIP Site Status Verification Database to provide the transparency needed for destinations that would be receiving livestock from a source premises. These end users could be, but not limited to Slaughter Facilities, State Animal Health Officials, Exhibition Organizers, Live Animal Marketing Operations, or other producers.

Data elements to be reported to the US SHIP Site Status Verification Database:

- Premises Identification Number (PIN)
- State: the state where the Premise is located
- Status Type: US SHIP
- Pathogen: either ASF (African Swine Fever) or CSF (Classical Swine Fever)
- Status: can assume three definitions based on the health status: Monitored Free, Certification Expired, or Inactive

The US SHIP House of Delegates requests the commissioning of a standing committee to explore how this could be executed by ALL US SHIP Official State Agencies (OSA).

Proposed data flow for the US SHIP Site Status Verification Database is shown below in Figure 2.

**Background/Reason:**

Currently not all OSAs are able to provide this information to the Site Verification Database. This is viewed as an important evolution within US SHIP to provide transparency for the destination locations to know the ASF and CSF status prior to shipment of the livestock.

Further investigation needs to be completed on how this data can be entered into the US SHIP Site Status Verification Database while being compliant with state statutes.

**Figure 2.** A visualization of proposed data flow for the site status verification database.

